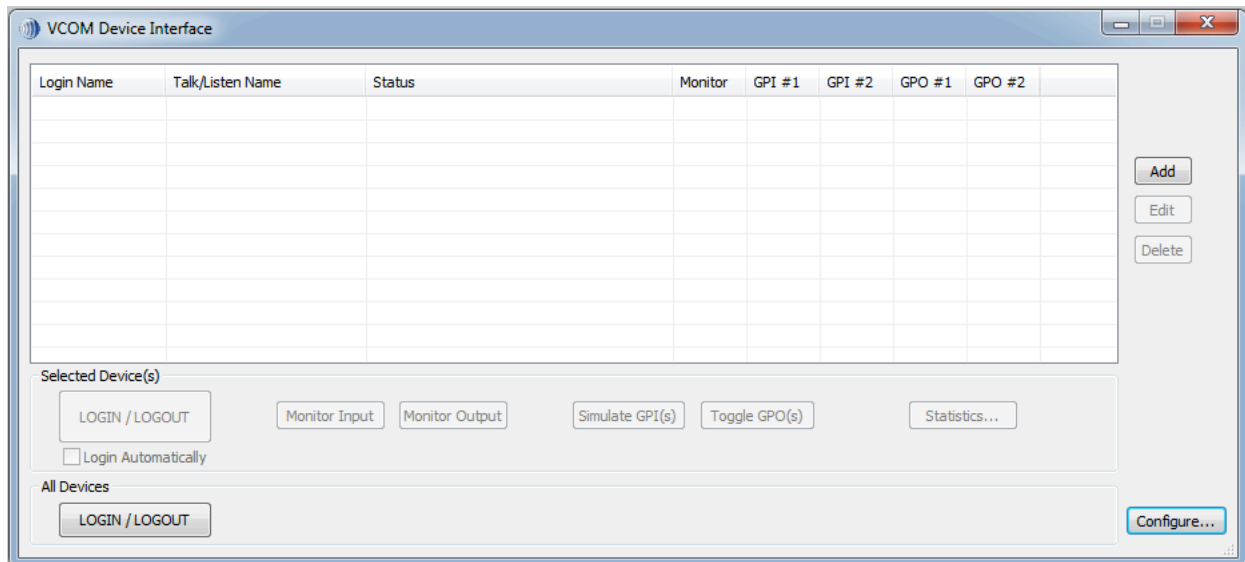




# VCOM Device Interface User Guide

Patent Pending: U.S. Serial # 11/970,871; International Serial # PCT/US08/50481



*Revised: 9-16-10*

**IntraCom Systems, LLC**  
20337 Via Medici  
Northridge, CA 91326  
Ph: 818-357-2347  
[support@intracomsystem.com](mailto:support@intracomsystem.com)  
[www.intracomsystem.com](http://www.intracomsystem.com)

Copyright © 2010 IntraCom Systems, LLC.

## **TABLE OF CONTENTS**

- 1 Introduction
  - 1.1 VCOM Device Interface
  - 1.2 System Requirements
- 2 Installation
- 3 Configuration
- 4 Operation
  - 4.1 Basic Functionality and Features
- 5 Troubleshooting
- 6 Support

# 1. INTRODUCTION

## 1.1 VCOM Device Interface

The VCOM Device Interface is a software application that bridges VCOM with multiple external communications systems. This document provides information on how to install, configure, and use the VCOM Device Interface.

Note, a hardware audio/logic interface is required to convert 4-wire and 2-wire analog signals into digital to bridge with the IP world, typically via USB or FireWire connection. To bridge a telephone system a hybrid is also required or a PC/server card which accepts analog phone lines or T-1(s) directly.

## 1.2 SYSTEM REQUIREMENTS

- Hardware Requirements
  - Pentium 4 2.0 GHz or equivalent w/ 1 GB RAM  
*Lower processing power PCs can be used however audio quality may be comprised under heavy CPU loads*
- Software Requirement
  - Windows XP, Windows Vista, Windows 7
- Network Requirement
  - Recommended configuration: 100BaseT connection over private LAN
  - Minimum configuration: 56kbps dial-up connection over public Internet
  - Bandwidth Utilization per client:

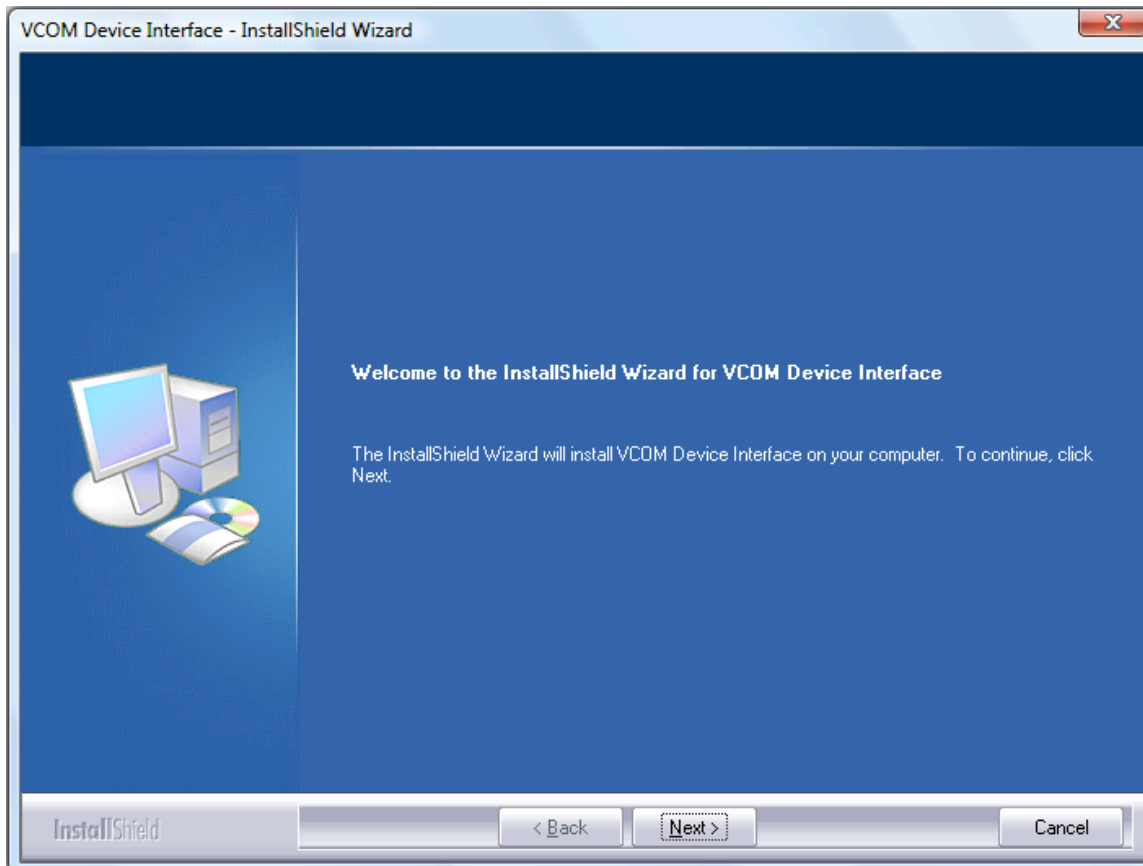
Audio Sample Rate	Data Rate (Kbps) [ATS=20ms*]	Data Rate (Kbps) [ATS=40ms*]	Data Rate (Kbps) [ATS=60ms*]	Data Rate (Kbps) [ATS=80ms*]	Data Rate (Kbps) [ATS=100ms*]
8 KHz	32	23.6	20.8	19.4	18.56
16 KHz	44.8	36.4	33.6	32.2	31.36
32 KHz	46.8	38.4	35.6	34.2	33.36

\*ATS = Audio Time Slice per packet which controls how many 20ms audio frames are transmitted within a single UDP packet. As each UDP packet requires a fixed amount of overhead, the more frames sent at the same time, the less the UDP overhead which conserves network bandwidth. Conversely, the more audio frames sent per transmission, the greater the system latency and the potential audible consequence of a lost packet. The default is 20ms.

## 2. INSTALLATION

Locate the VCOM Device Interface setup application, typically named 'VCOM\_Device\_Interface\_Setup.exe,' that was provided either electronically or on CD.

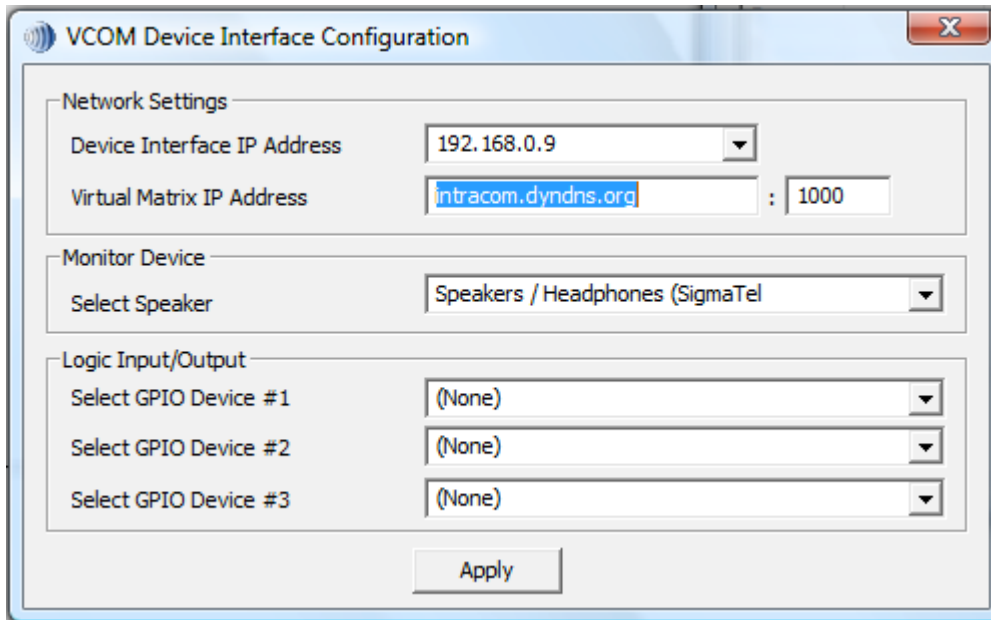
Run the installer and follow the prompts. You will need to accept IntraCom Systems' License Agreement to install the software.



Once installation is complete check the 'Launch VCOM Device Interface' box and click 'Finish.'

## 3. CONFIGURATION

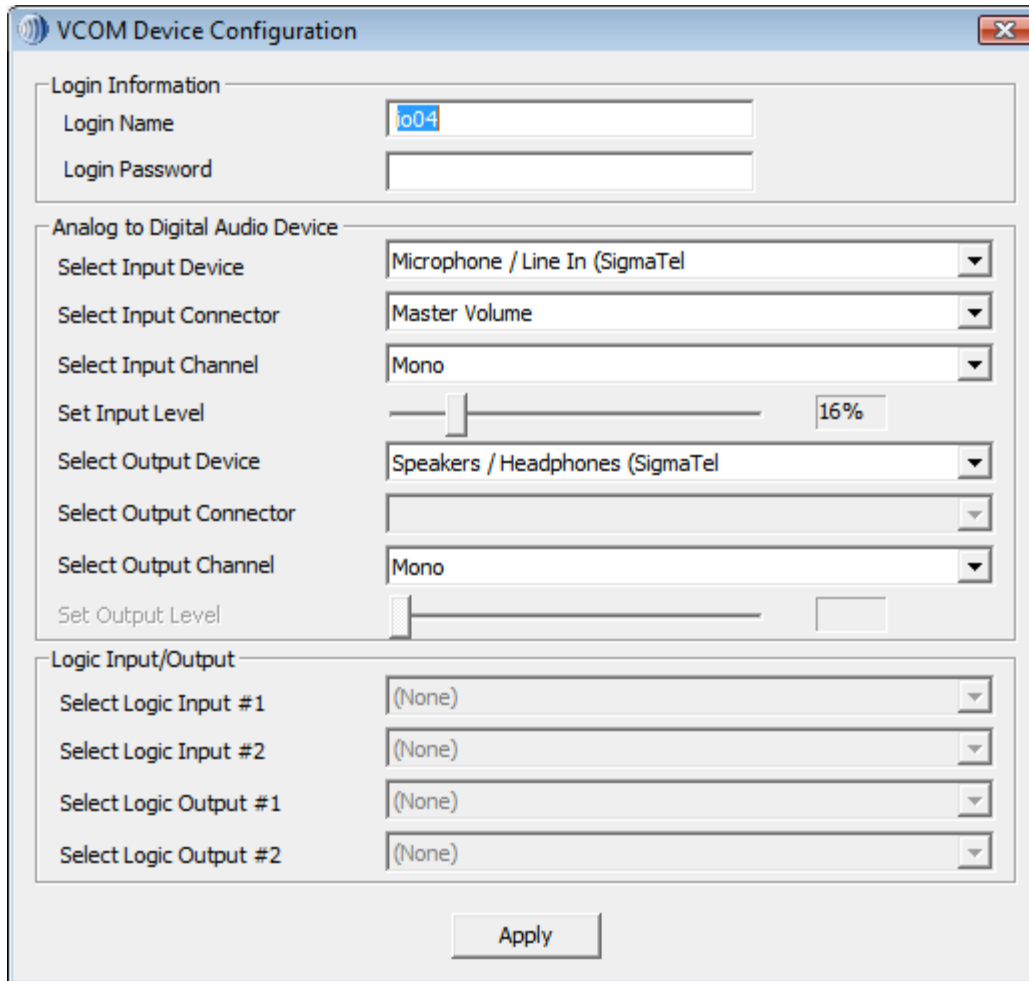
When running the 'VCOM Device Interface' for the first time, the 'VCOM Device Interface Configuration' screen will automatically appear.



- Under 'Network Settings' enter the 'Virtual Matrix IP Address' and port number (after the colon) supplied by your system administrator. The 'Device Interface IP Address' is your computer's IP address and should already be input however some PC may have multiple connections so be sure that the correct address is selected.
- Under 'Monitor Device,' the secondary audio output device can be selected. Typically this will be an external speaker that will allow monitoring the audio input and output of the configured devices.
- Under 'Logic Input/Output,' optionally select the GPIO(s) device (if any) that you will use to control your audio device(s).

When complete, click the 'Close' button to save the configured settings and close the 'VCOM Device Interface Configuration' dialog box. The main 'VCOM Device Interface' window will be displayed.





- Under 'Login Information' enter the 'Login Name' and 'Login Password' for the device as pre-configured in the VCOM System Configuration application.
- Under 'Analog to Digital Audio Device' the audio input/output device must be selected. Typically this will be a USB 4-wire to digital converter however any audio input and output device can be used. Use the 'Select Input Device' drop down to locate the correct audio input device. Often, but not always, the 'Select Input Connector' and 'Select Output Device' drop downs will automatically default to correct setting. The 'Select Input Connector' drop down allows selection of which input jack the audio input device is to use. The 'Select Input Channel' drop down allows selection of 'Mono,' 'Stereo - Left,' or 'Stereo - Right.' Use 'Set Input Level' to adjust your input audio level if necessary and/or applicable. Use the 'Select Output Device' drop down to locate the correct audio output device if not already defaulted. The 'Select Output Connector' drop down allows selection of which output jack the

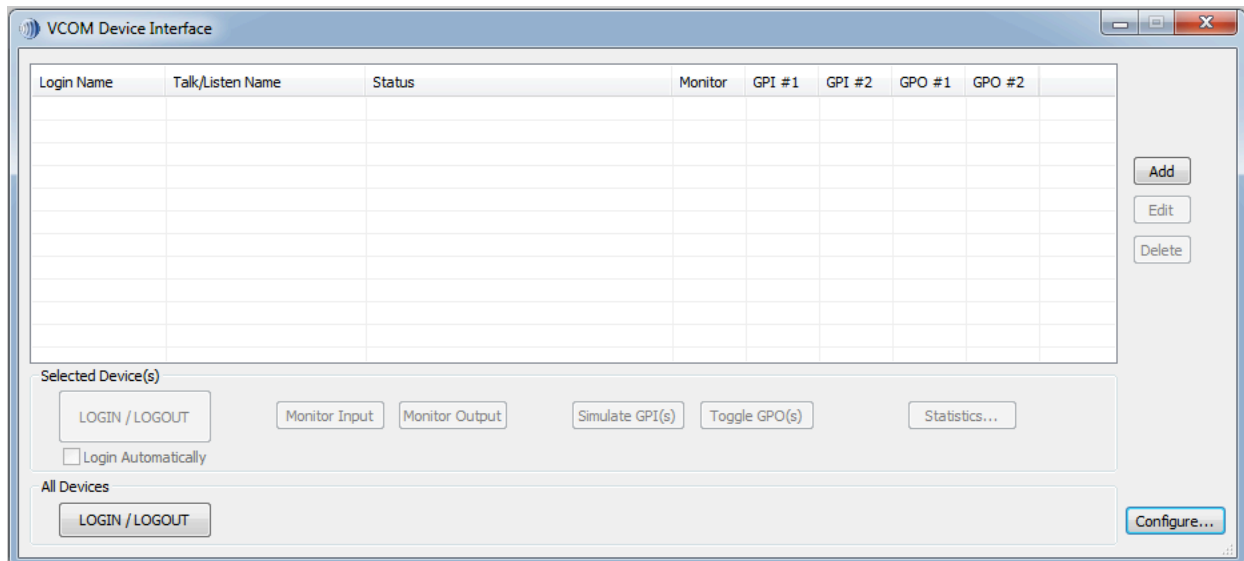
audio output device is to use. The 'Select Output Channel' drop down allows selection of 'Mono,' 'Stereo – Left,' or 'Stereo – Right.'

- Under 'Logic Input/Output,' select the logic protocol and input(s)/output(s) that you wish to use for the given audio device. Note, in most circumstances you will only have one logic input and output.

## 4. OPERATION

### 4.1 BASIC FUNCTIONALITY AND FEATURES

This section covers the basic functionality and features of the VCOM Device Interface.



#### All Devices

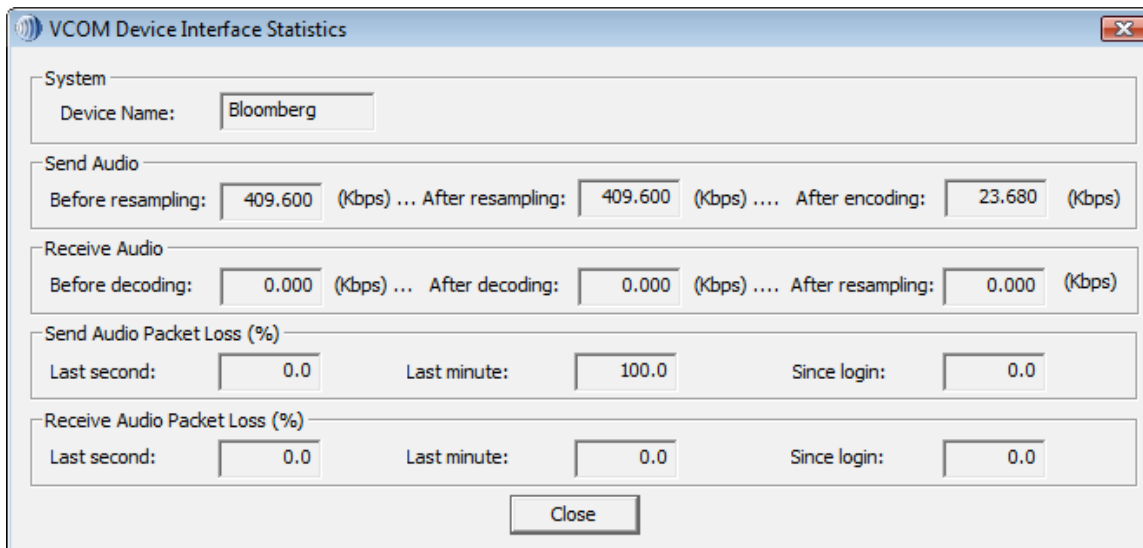
- The 'Login / Logout' button connects or disconnects all configured Devices simultaneously.

#### Selected Device(s)

*Buttons in the section operate only on the selected device in the Device List*

- 'Login / Logout' connects or disconnects the selected device.

- 'Monitor Input' allows monitoring off the audio being sent from the Device to the Virtual Matrix.
- 'Monitor Output' allows monitoring off the audio being sent from the Virtual Matrix to the Device.
- 'Simulate GPI(s)' demonstrates the effect of activating the configured General Purpose Inputs and is for testing purposes only.
- 'Toggle GPO(s)' forces activation of the configured General Purpose Outputs and is for testing purposes only.
- 'Statistics' displays the send and receive audio rates and packet loss data.



### Side Bar Buttons

- 'Configure' brings up the 'VCOM Device Interface Configuration' window. For a description of this window, please refer to the Configuration section of this manual.
- 'Add' brings up the 'VCOM Device Configuration' window to add a device.
- 'Edit' brings up the 'VCOM Device Configuration' window corresponding to the device highlighted in the Device List.
- 'Delete' deletes the device highlighted in the Device List.

## 5. TROUBLESHOOTING

Following are answers to the most commonly experienced issues of new users.

**Q: When attempting to login to the Virtual Matrix I get a “Cannot connect to Virtual Matrix” message?**

A: The Device Interface is unable to establish a TCP/IP data connection with the Virtual Matrix. Check the Device Interface Configuration to ensure ‘Device Interface IP Address’ is valid and represents a valid and active network connection. Ensure that the ‘Virtual Matrix IP Address’ is entered exactly as provided with the designated port number. Check to ensure a corporate firewall is not intentionally blocking the designated TCP/IP data port.

**Q: When attempting to login to the Virtual Matrix I get a “Unable to establish return audio path” message?**

A: The Device Interface is unable to establish a UDP audio connection with the Virtual Matrix. Check to ensure a corporate firewall is not intentionally blocking the designated UDP audio port which is typically the same as the TCP/IP data port.

**Q: When attempting to login to the Virtual Matrix I get a “Provided user name and/or password is invalid!” message?**

A: The Device Interface is unable to validate the username and password. Check to ensure the name is typed exactly as provided as the username and password are both case sensitive. Check to ensure the correct TCP/IP data port is specified to ensure you are logging in to the correct system.

## 6. SUPPORT

Visit our web site at [www.intracomsystem.com](http://www.intracomsystem.com) for general information.

Email us at [support@intracomsystem.com](mailto:support@intracomsystem.com) for questions not addressed in the sections above or call our technical support hotline at 818-357-2347.

###