

Samsung recommends Windows Vista® Business



imagine your world in the palm
of your hand.

Q1 Ultra

Ultra Mobile Personal Computers



Samsung Q1 Ultra UMPC

Ultra Mobile Personal Computers

Imagine traveling light and still being able to take it all with you. You can do that with the Samsung Q1 Ultra family of ultra mobile personal computers. Measuring smaller than 5" x 9" and weighing under two pounds, the Q1 Ultra UMPCs are small enough to take anywhere. And with wireless connectivity, a genuine Windows operating system to seamlessly support all your files, and complete entertainment capabilities that include music and photos and videos and movies, you won't be leaving a thing behind. Except, of course, several pounds. With a Samsung Q1 Ultra UMPC, it's not hard to imagine.

It's the center of your busy world.



Connectivity

Wireless 802.11 b/g Wi-Fi Connect at home, in airports, coffee shops and other wireless hot spots.

Wireless Bluetooth 2.0 Connect a wireless mouse, headset or any other Bluetooth device.

Wired 10/100 Base-Tx Ethernet Plug in and you're connected.

3G HSDPA Cellular Modem Stay connected on the AT&T BroadbandConnect cellular wireless network*.

VoIP and Video Chat The speakers, 300 pixel webcam and dual array microphone let you communicate however you want (additional software required).

Productivity

Memory Choose between 1 or 2 GB versions.

Storage 1.8" Hard Disk Drive in 40, 60 or 80 GB capacities, or 32 GB Solid State Flash (NAND) Hard Drive.

Touch Screen LCD Tired of using the keyboard or mouse? Navigate or take notes directly on the 7" touch screen.

USB Connect an optional keyboard, optional disk drive or any other USB connected device.

SD Card Slot Transfer photos, movies, files and more to and from your Q1 Ultra.

SRS TruSurround Sound System HD-quality stereo audio sounds better than most MP3 players. 1.5W x 2 speakers means you don't have to bring your own.

Security An AuthenTec biometric fingerprint reader secures your confidential information.

Portable. Powerful. And now a Premium version.

Q1 Ultra	Q1 Ultra Premium
Intel Ultra Mobile A100 (600 MHz) Intel Ultra Mobile A110 (800 MHz)	Intel Pentium Core Solo ULV U1500 (1.33 GHz)
	
 Up to 4.5 Hours Battery Life	 Up to 7 Hours Battery Life

Not all features are available on all models. See specifications chart for details. *Only available on select models. Requires separate activation with cellular network provider.

You'll be fully functional on the road.

Full Windows XP or Vista OS Windows XP Tablet Edition or Windows Vista Business runs all the same software your home or office computer does. Software and files open properly, all the time.

Microsoft Touch Pack The Q1 Ultra comes loaded with Microsoft Touch Pack software, which includes a one-touch Program Launcher, Brilliant Black touchscreen media interface and Sudoku games.

Portrait Orientation You can take notes in portrait mode (vertically) with the supplied stylus, just like on a pad of paper. Or use the Q1 Ultra as an eReader to enjoy the latest bestseller.

Add an External Keyboard, Docking Station, Monitor and Printer With added accessories, the Q1 Ultra can be as small or as big as you need.

Use in Confined Spaces The Q1 Ultra is easy to use anywhere space is at a premium, regardless if you're sitting or standing.



Who's the Q1 Ultra UMPC perfect for? You.

Sales <ul style="list-style-type: none"> Give portable multimedia presentations Show product images and details to customers on the spot 	Sales Force Automation <ul style="list-style-type: none"> Communicate customer requirements and get digital signatures while in the field Take orders 	Healthcare <ul style="list-style-type: none"> Easily take patient notes during diagnoses, either by using the Q1 Ultra as a notepad or by recording your voice Send, store and/or access patient prescriptions, medical records and electronic image information
Public Service <ul style="list-style-type: none"> Search address and automotive databases Take notes and photos at accidents and crime scenes 	Education <ul style="list-style-type: none"> Ideal for note-taking, then convert to typed text later Record lectures for later review Connect to the internet for research Read the latest assigned book easily in portrait mode 	Field Research and Field Service <ul style="list-style-type: none"> Create reports in the field, and send them into the office immediately Stay up-to-date on cost expenditures Collect data and provide updates in real time
Logistics <ul style="list-style-type: none"> Get inventory information in real time Use as a remote management system 		

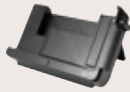
It gives you everything you need. And then some.



Specifications	Q1 Ultra				Q1 Ultra Premium	
	Q1U-ELXP	Q1U-XP	Q1U-SSDXP	Q1U-CMXP	Q1UP-XP	Q1UP-V
Operating System	Genuine Windows XP® Tablet Edition	Genuine Windows XP® Tablet Edition	Genuine Windows XP® Tablet Edition	Genuine Windows XP® Tablet Edition	Genuine Windows XP® Tablet Edition	Genuine Windows Vista® Business
CPU	Intel® Ultra Mobile Processor A100	Intel® Ultra Mobile Processor A110	Intel® Ultra Mobile Processor A110	Intel® Ultra Mobile Processor A110	Intel Pentium ULV U1500	Intel Pentium ULV U1500
CPU Clock Speed	600 MHz	800 MHz	800 MHz	800 MHz	1.33 GHz	1.33 GHz
CPU Front Side Bus Speed	400 MHz	400 MHz	400 MHz	400 MHz	533 MHz	533 MHz
CPU Cache	512 Kb L2	512 Kb L2	512 Kb L2	512 Kb L2	2MB Level 2	2MB Level 2
System Memory	1 GB	1 GB	1 GB	1 GB	1 GB	2 GB
Memory Type	DDR2 400 MHz	DDR2 400 MHz	DDR2 400 MHz	DDR2 400 MHz	DDR2 667 MHz	DDR2 667 MHz
LCD Standard	WSVGA	WSVGA	WSVGA	WSVGA	WSVGA	WSVGA
LCD Size	7" Wide	7" Wide	7" Wide	7" Wide	7" Wide	7" Wide
LCD Native Resolution	1024 x 600	1024 x 600	1024 x 600	1024 x 600	1024 x 600	1024 x 600
LCD Brightness	300 nits	300 nits	300 nits	300 nits	300 nits	300 nits
LCD Technology	LED Backlit	LED Backlit	LED Backlit	LED Backlit	LED Backlit	LED Backlit
LCD Touch Screen	7" WSVGA Touch Screen LCD	7" WSVGA Touch Screen LCD	7" WSVGA Touch Screen LCD	7" WSVGA Touch Screen LCD	7" WSVGA Touch Screen LCD	7" WSVGA Touch Screen LCD
Graphics Chip	Intel GMS950	Intel GMS950	Intel GMS950	Intel GMS950	Intel GMS945	Intel GMS945
Graphics Memory	128 MB Shared	128 MB Shared	128 MB Shared	128 MB Shared	128 MB Shared	128 MB Shared
Hard Drive	40 GB	60 GB	32 GB	80 GB	80 GB	80 GB
Hard Drive Specs	1.8", 4200 RPM	1.8", 4200 RPM	SSD Flash NAND	1.8", 4200 RPM	1.8", 4200 RPM	1.8", 4200 RPM
Optical Disk Drive	Optional - External	Optional - External	Optional - External	Optional - External	Optional - External	Optional - External
Keyboard Type	Split-QWERTY	Split-QWERTY	Split-QWERTY	Split-QWERTY	Split-QWERTY V1.5	Split-QWERTY V1.5
Keyboard Specs	39 Keys + 4 User Defined Keys + Enter Key	39 Keys + 4 User Defined Keys + Enter Key	39 Keys + 4 User Defined Keys + Enter Key	39 Keys + 4 User Defined Keys + Enter Key	39 Keys + 4 User Defined Keys + Enter Key	39 Keys + 4 User Defined Keys + Enter Key
Wireless Communications	802.11b/g, Bluetooth 2.0 + EDR	802.11b/g, Bluetooth 2.0 + EDR	802.11b/g, Bluetooth 2.0 + EDR	802.11b/g, Bluetooth 2.0 + EDR	802.11b/g, Bluetooth 2.0 + EDR	802.11b/g, Bluetooth 2.0 + EDR
Wired Communications	10/100 BaseTX	10/100 BaseTX	10/100 BaseTX	10/100 BaseTX, HSDPA Cellular Modem	10/100 BaseTX	10/100 BaseTX
Audio Specs	HD Audio	HD Audio	HD Audio	HD Audio	HD Audio	HD Audio
Audio Speakers	1.5W x 2	1.5W x 2	1.5W x 2	1.5W x 2	1.5W x 2	1.5W x 2
Microphone	Dual Array - Embedded	Dual Array - Embedded	Dual Array - Embedded	Dual Array - Embedded	Dual Array - Embedded	Dual Array - Embedded
Security	AuthenTec Fingerprint Reader	AuthenTec Fingerprint Reader	AuthenTec Fingerprint Reader	AuthenTec Fingerprint Reader	AuthenTec Fingerprint Reader	AuthenTec Fingerprint Reader
Cameras	300P - Video Chat (Front), 1.3MP - Video/Still (Rear)	300P - Video Chat (Front), 1.3MP - Video/Still (Rear)	300P - Video Chat (Front), 1.3MP - Video/Still (Rear)	300P - Video Chat (Front), 1.3MP - Video/Still (Rear)	300P - Video Chat (Front), 1.3MP - Video/Still (Rear)	300P - Video Chat (Front), 1.3MP - Video/Still (Rear)
I/O Ports	2-USB 2.0, 2-in-1 Memory Slot (SD/MMC), DB-15 pin External VGA, Headphone Jack, RJ-45, Ethernet Jack	2-USB 2.0, 2-in-1 Memory Slot (SD/MMC), DB-15 pin External VGA, Headphone Jack, RJ-45, Ethernet Jack	2-USB 2.0, 2-in-1 Memory Slot (SD/MMC), DB-15 pin External VGA, Headphone Jack, RJ-45, Ethernet Jack	2-USB 2.0, 2-in-1 Memory Slot (SD/MMC), DB-15 pin External VGA, Headphone Jack, RJ-45, Ethernet Jack, SIM Slot	2-USB 2.0, 2-in-1 Memory Slot (SD/MMC), DB-15 pin External VGA, Headphone Jack, RJ-45, Ethernet Jack	2-USB 2.0, 2-in-1 Memory Slot (SD/MMC), DB-15 pin External VGA, Headphone Jack, RJ-45, Ethernet Jack
User Interface	4-User Defined Keys, Enter/Launch Key, Volume Control Buttons, Quick Launch Menu Button, 8-Way Direction Joystick and Mouse Function, Left/Right Mouse Buttons, Camera Shutter, Button, System Reset Switch	4-User Defined Keys, Enter/Launch Key, Volume Control Buttons, Quick Launch Menu Button, 8-Way Direction Joystick and Mouse Function, Left/Right Mouse Buttons, Camera Shutter, Button, System Reset Switch	4-User Defined Keys, Enter/Launch Key, Volume Control Buttons, Quick Launch Menu Button, 8-Way Direction Joystick and Mouse Function, Left/Right Mouse Buttons, Camera Shutter, Button, System Reset Switch	4-User Defined Keys, Enter/Launch Key, Volume Control Buttons, Quick Launch Menu Button, 8-Way Direction Joystick and Mouse Function, Left/Right Mouse Buttons, Camera Shutter, Button, System Reset Switch	4-User Defined Keys, Enter/Launch Key, Volume Control Buttons, Quick Launch Menu Button, 8-Way Direction Joystick and Mouse Function, Left/Right Mouse Buttons, Camera Shutter, Button, System Reset Switch	4-User Defined Keys, Enter/Launch Key, Volume Control Buttons, Quick Launch Menu Button, 8-Way Direction Joystick and Mouse Function, Left/Right Mouse Buttons, Camera Shutter, Button, System Reset Switch
MultiMedia Instant-On	AVStation Now 5.0	AVStation Now 5.0	AVStation Now 5.0	AVStation Now 5.0	AVStation Now 5.0	AVStation Now 5.0
Battery Type	Li-Ion, Prismatic	Li-Ion, Prismatic	Li-Ion, Prismatic	Li-Ion, Prismatic	Li-Ion, Prismatic	Li-Ion, Prismatic
Standard Battery Capacity	29.6 wh (4-cell)	29.6 wh (4-cell)	29.6 wh (4-cell)	29.6 wh (4-cell)	57.7 wh (6-cell)	57.7 wh (6-cell)
Standard Battery Life	Up to 4.5 hours	Up to 4.5 hours	Up to 4.5 hours	Up to 4.5 hours	Up to 7 hours	Up to 7 hours
Power Management	ACPA V2.0 Compliant	ACPA V2.0 Compliant	ACPA V2.0 Compliant	ACPA V2.0 Compliant	ACPA V2.0 Compliant	ACPA V2.0 Compliant
Other	Stylus, USB File Management Transfer/Sync Cable, Wrist Strap, Slip Cover	Stylus, USB File Management Transfer/Sync Cable, Wrist Strap, Slip Cover	Stylus, USB File Management Transfer/Sync Cable, Wrist Strap, Slip Cover	Stylus, USB File Management Transfer/Sync Cable, Wrist Strap, Slip Cover	Stylus, USB File Management Transfer/Sync Cable, Wrist Strap, Slip Cover	Stylus, USB File Management Transfer/Sync Cable, Wrist Strap, Slip Cover
Included Software	AVStation Now MultiMedia, SRS TruSurround Sound, McAfee Virus Scan (30-day Trial), Adobe Reader, Samsung Easy Display Manager, Samsung Easy Battery Manager, Samsung Easy Network Manager, Samsung Magic Doctor Diagnostics	AVStation Now MultiMedia, SRS TruSurround Sound, McAfee Virus Scan (30-day Trial), Adobe Reader, Samsung Easy Display Manager, Samsung Easy Battery Manager, Samsung Easy Network Manager, Samsung Magic Doctor Diagnostics	AVStation Now MultiMedia, SRS TruSurround Sound, McAfee Virus Scan (30-day Trial), Adobe Reader, Samsung Easy Display Manager, Samsung Easy Battery Manager, Samsung Easy Network Manager, Samsung Magic Doctor Diagnostics	AVStation Now MultiMedia, SRS TruSurround Sound, McAfee Virus Scan (30-day Trial), Adobe Reader, Samsung Easy Display Manager, Samsung Easy Battery Manager, Samsung Easy Network Manager, Samsung Magic Doctor Diagnostics	AVStation Now MultiMedia, SRS TruSurround Sound, McAfee Virus Scan (30-day Trial), Adobe Reader, Samsung Easy Display Manager, Samsung Easy Battery Manager, Samsung Easy Network Manager, Samsung Magic Doctor Diagnostics	AVStation Now MultiMedia, SRS TruSurround Sound, McAfee Virus Scan (30-day Trial), Adobe Reader, Samsung Easy Display Manager, Samsung Easy Battery Manager, Samsung Easy Network Manager, Samsung Magic Doctor Diagnostics
Weight (w/Battery)	1.52 lbs.	1.52 lbs.	1.44 lbs.	1.52 lbs.	1.9 lbs.	1.9 lbs.
Dimensions (W x H x D)	8.96" x 4.88" x 0.93"	8.96" x 4.88" x 0.93"	8.96" x 4.88" x 0.93"	8.96" x 4.88" x 0.93"	8.96" x 4.88" x 1.16"	8.96" x 4.88" x 1.16"
AC Adapter	100-240 VAC, 50-60Hz, AutoSensing	100-240 VAC, 50-60Hz, AutoSensing	100-240 VAC, 50-60Hz, AutoSensing	100-240 VAC, 50-60Hz, AutoSensing	100-240 VAC, 50-60Hz, AutoSensing	100-240 VAC, 50-60Hz, AutoSensing
AC Adapter Weight	0.83 lbs.	0.83 lbs.	0.83 lbs.	0.83 lbs.	0.83 lbs.	0.83 lbs.
Total Travel Weight	2.35 lbs.	2.35 lbs.	2.27 lbs.	2.35 lbs.	2.73 lbs.	2.73 lbs.
Warranty	1 year parts and labor	1 year parts and labor	1 year parts and labor	1 year parts and labor	1 year parts and labor	1 year parts and labor

Accessories

Docking Station
(Includes AC Adapter)
PN: AA-RD0UQIU



External DVD RW
+/- Dual Layer Disk Drive
PN: AA-ES2U12B



Car Adapter
PN: AA-PCONCAR



GPS (Includes Car Adapter,
Antenna and Software)
PN: AA-PK1UNAV



6-Cell Extended
Life Battery
PN: AA-PL1UC6B



Replacement Stylus
3-pak
PN: AA-EX1UPEN



USB 2.0 File Management
System (Included)
PN: AA-EX0TSYN



8-Cell Power Bank
PN: AA-PL1UC8B



Q1 Ultra
Organizer Case
PN: AA-EX2UORG



USB Keyboard and Integrated
Track Point Mouse
PN: AA-SK0TKBD



AC Adapter
PN: SPA-P30



Q1 Ultra Premium
Organizer Case
PN: AA-EX4UORG



1-800-SAMSUNG
www.samsung.com/Q1